

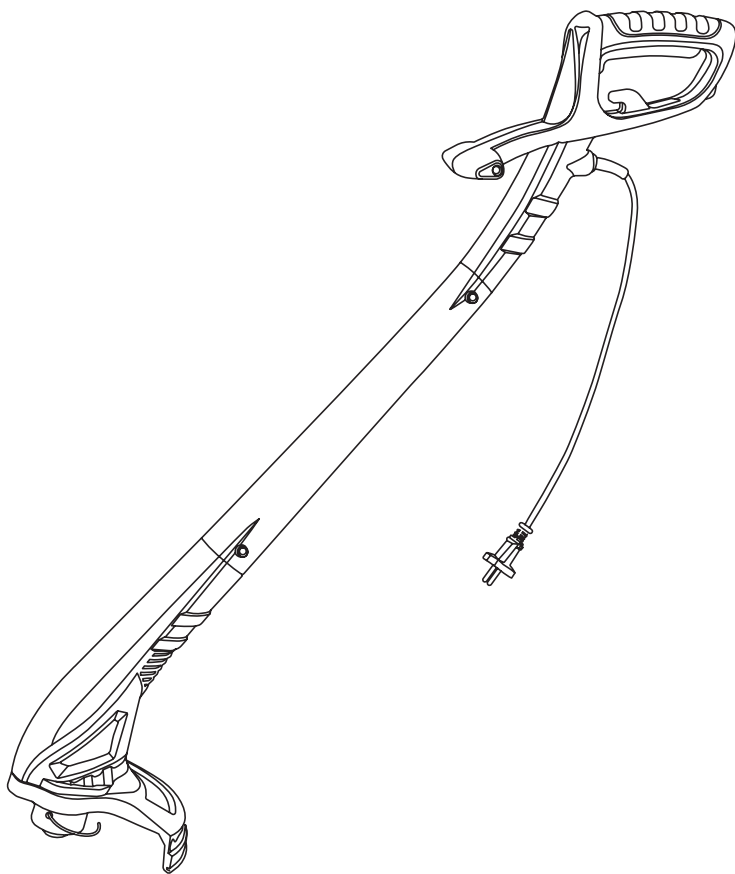
**Please, read this manual
carefully before use!**

Owner's Manual



Electric String Trimmer

KS GT-250





Thank you for opting for **Könner & Söhnen®** products. This manual contains a brief description of safety, setup and use. More information can be found on the official importer's website in the support section: **konner-sohnen.com/manuals**

You can also go to the support section and download the manual by scanning the QR code or on the website of the official importer of **Könner & Söhnen®** at **www.konner-sohnen.com**



*Please, read this manual
carefully before use!*

The manufacturer of **Könner & Söhnen®** products reserves the right to make changes that may not be reflected in this manual, namely:

- The manufacturer reserves the right to make changes in the product design, configuration and construction.
- The images and drawings in this manual are for reference only and may differ from the actual components and inscriptions on the products.

Contact information that you are free to use in case of any problems can be found at the end of this manual. All information in this manual is correct to the best of our knowledge and belief at the date of its publication. The current list of service centers can be found on the official importer's website at **www.konner-sohnen.com**



ATTENTION – DANGER!



Failure to follow the recommendations marked with this sign may lead to serious injury or death of the operator or third parties.



IMPORTANT!



Useful information while operating the machine.

SAFETY INSTRUCTION

1



WARNING!



Read all instructions failure to follow all instructions listed below may result in electric shock, fire and /or serious injury. The term "power tool" in all of the warnings listed below refers to your mains operated (corded) power tools.

SAVE THESE INSTRUCTIONS

1) WORK AREA

- Keep the work area clean and well lit. Cluttered and dark areas invite accidents
- Do not operate power tools in explosive atmospheres, such as in the presence of flammable liquids, gases or dust. Power tools create sparks, which may ignite the dust or fumes.
- Keep children and bystanders away while operating a power tool. Distractions can cause you to lose control.

2) ELECTRICAL SAFETY

- Power tool plugs must match the outlet. Never modify the plug in any way. Do not use any adapter plugs with earthed (grounded) power tools. Unmodified plugs and matching outlets will reduce risk of electric shock.
- Avoid body contact with earthed or grounded surfaces such as pipes, radiators, ranges and refrigerators. There is an increased risk of electric shock if your body is earthed or grounded.

c) Do not expose power tools to rain or wet conditions. Water entering a power tool will increase the risk of electric shock.

d) Do not abuse the cord. Never use the cord for carrying, pulling or unplugging the power tool. Keep the cord away from heat, oil and sharp edges or moving parts. Damaged or entangled cords increase the risk of electric shock.

e) When operating a power tool outdoors, use an extension cord suitable for outdoor use. Use of a cord suitable for outdoor use reduces the risk of electric shock.

3) PERSONAL SAFETY

a) Stay alert. Watch what you are doing and use common sense when operating a power tool. Do not operate tool when you are tired or under the influence of drugs, alcohol or medication. A moment of inattention while operating power tools may result in serious personal injury.

b) Use safety equipment. Always wear eye protection. Safety equipment such as dust mask, non-skid safety shoes, hard hat, or hearing protection used for appropriate conditions will reduce personal injuries.

c) Avoid accidental starting. Ensure the switch is in the off position before plugging in. Carrying power tools with your finger on the switch or plugging in power tools that have the switch on invites accidents.

d) Remove any adjusting key or wrench before turning the power tool on. A wrench or a key left attached to a rotating part of the power tool may result in personal injury

e) Do not overreach. Keep proper footing and balance at all times. This enables better control of the power tool in unexpected situations.

f) Dress properly. Do not wear loose clothing or jewelry. Keep your hair, clothing and gloves away from moving parts. Loose clothes, jewelry or long hair can be caught in moving parts.

4) POWER TOOL USE AND CARE

a) Do not force the tool. Use the correct power tool for your application, The correct power tools will do the job better and safer at the rate for which it was designed.

b) Do not use the power tool if the switch does not turn it on and off. Any power tool that can not be controlled with the switch is dangerous and must be repaired.

c) Disconnect the plug from the power source before making any adjustments, changing accessories, or storing power tools. Such preventive safety measures reduce the risk of starting the power tool accidentally.

d) Store idle power tools out of the reach of children and do not allow persons unfamiliar with the power tool or these instructions to operate the power tool. Power tools are dangerous in the hands of untrained users.

e) Maintain power tools, Check for misalignment or binding of moving parts, breakage of parts and any other condition that may affect the power tools operation. If damaged, have the power tool repaired before use. Many accidents are caused by poorly maintained power tools.

f) Keep cutting tools sharp and clean. Properly maintained cutting tools with sharp cutting edges are less likely to bind and are easier to control

g) Use the power tool, accessories and tool bits etc. in accordance with these instructions and in the manner intended for particular type of power tool, taking into account the working conditions and the work to be performed. Use of the power tool for operations different from intended could result in a hazardous situation.

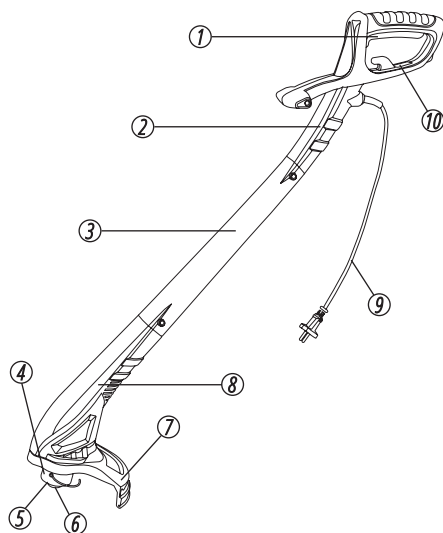
5) SERVICE

Have your power tool serviced by a qualified repair person using only identical replacement parts. This will ensure that the safety of the power tool is maintained

- Only use this grass trimmer when a Residual Current Device (RCD) with a tripping current of not more than 30Ma is in the circuit.
- If an extension cord is used make sure it is for outdoor use and marked as such. The recommended size of extension cord is not lighter than 1.0mm² and a maximum of 10 meters in length.
- Danger! The cutting elements continue to rotate after the motor is switched off.
- Before use check the supply and extension cord for signs of damage or ageing. If the cord becomes damaged during use, disconnect the cord from the supply immediately. Do not touch it before disconnecting the supply.
- Do not use the appliance if the cord is damaged or worn.
- Read the instruction carefully. Be familiar with the controls and proper use of the equipment.
- Keep extension cord away from cutting elements.
- Wear ear, eye and dust protection at all times.
- Never allow children, people unfamiliar with these instructions to use the trimmer
- Avoid using the trimmer while people, especially children, infirm people or pets, are nearby.
- Use the trimmer only in daylight or good artificial light.
- Never operate the trimmer with damaged guards or shields or without guards or shields in place.
- Switch on the motor only when the hands and feet are away from the cutting means.
- Never fit metal cutting elements.
- Use only the manufacturer's recommended placement parts and accessories.
- Always disconnect the trimmer from the mains when leaving the trimmer unattended.
- Disconnect the trimmer from the mains before carrying out maintenance or cleaning work.
- Inspect and maintain the trimmer regularly. Have the trimmer repaired only by an authorized repairer.
- Take care against injury from the blades fitted for trimmer the filament line length. After extending new cutter line or replacing the spool line. Always return the trimmer to its normal operating position before switching on.
- Always ensure that the ventilation openings are kept clear of debris.
- When not in use, store the trimmer out of the reach of children and infirm people.
- Warning! In order to reduce the risk, disconnect the plug from the supply power, only use recommended accessories as required, otherwise personal injury may result.
- Periodically inspect the condition of the cutting head. If the spool is damaged, switch off, remove the plug from the power point and replace the spool.
- Do not use the machine to cut grass, which is not on the ground. For example, do not cut grass, which is on walls or rocks
- Always stop the trimmer and switch off at the mains when cutting is delayed or when walking from one cutting location to another.
- Do not cross roads or gravel paths with machine still running.
- After use, disconnect the machine from the power supply and check for damage. If you have the slightest doubts, check with the authorized service center.
- Only use the machine according to the instructions give in this manual.
- Do not extend the trimming line beyond the guard and do not operate the trimmer without both lines extended and proper line installed.
- Check regularly that the nuts, bolts and screws are tight.

DESCRIPTION

3



1. Switch Trigger
2. Main Handle
3. Middle Tube
4. Bracket
5. Spool Cover
6. Spool
7. Safety Gaurd
8. Motor Housing
9. Power Cord
10. Cord Hole for Hook

TECHNICAL SPECIFICATION

4

Model	KS GT-250
Voltage	230V/50 Hz
Power input	250 W
No load speed	12000 min ⁻¹
Line diameter	1,2 mm
Cutting width	22 cm
Gross dimensions (L×W×H)	195×120×400 mm
Gross/Net weight	1,46/1,22 kg

Guaranteed weight sound power level 96dB(A)
Vibration 4.43m/s²

ASSEMBLY

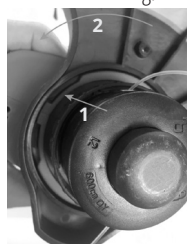
5

Fig. 1



1 - guard, 2 - screw 4X18

Fig. 2



- 1 - Pay attention to here to make sure it is put in position.
- 2 - Turn this Guard this direction about 90 degrees.

ASSEMBLY OF GUARD

The only assembly required for your trimmer is to install guard and Insert the Middle Tube(3).

- 1) Place the Safety Guard on the Motor Housing head.
- 2) turn the Safety Guard to have the hole in the Safety Guard to fit the screw hole in the Motor Head and lock it.

INSERT THE MIDDLE TUBE

- 1) Insert the Middle tube(3) to the Main Handle and Motor Housing in Position.
- 2) Tightening it with 2 Tapping Screws 4X18 to lock it.



Fig. 3

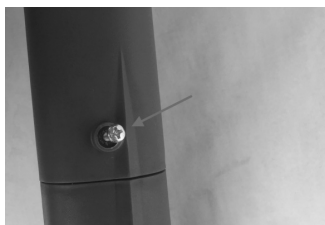


Fig. 4



Fig. 5

OPERATION

6

1. Before use, check that the tools in good working condition and that the length of the trimmer line is correct.
2. Remove the cover of the line cutting blade.
3. Examine the general condition of the tool. Inspect the guard, switch, cordset and extension line. Check for loose screws, misalignment, and binding of moving parts, improper mounting, broken parts and any other condition that may affect its safe operation. If abnormal noise or vibration occurs during operation, turn the line trimmer off immediately and have the problem corrected. Do not use a damaged tool.

WARNING! WHEN YOU ARE OPERATING

1. Ensure that you are on a flat surface and have secure footing.
2. Check that the line touches or goes beyond the edge of the guard.
3. If the line is too short, pull on the nylon line and repeatedly press the spool button until the line reaches the edge of the guard. Pull the second line until it reaches the edge of the guard.



WARNING!



For your own safety when adjusting the length of the line, avoid coming into contact with the line cutting blade which is fixed to the guard. It is extremely sharp. Keep your hands well away from this area.



WARNING!



The tool runs for approximately 5 seconds after it has been switched off. Let the motor come to a complete stand still before setting the tool down.

EXTENDING THE LINE

To extend the line press the spool onto the ground whilst the motor is turning and the line will extend automatically. For most effective grass trimming, ensure the machine is operation at full speed and then use slow shallow sweeps of the line, ensuring that you do not overload the machine by cutting too fast or cutting through heavy terrain.

TRIMMING

- 1) Make sure that the work area is free of rock, debris, lines and other foreign objects.
- 2) Start the tool before approaching the grass to be cut.
- 3) If you need to release the line, please "bump" the spool button of the trimmer on the ground to feed out more line. If too much line is fed out and it projects beyond the guard edge it is cut by the line cutting blade.
- 4) Cut the grass by swinging the tool from right to left and proceed slowly keeping the trimmer inclined forwards at an angle of about 30°. Light cuts are better than heavy cuts as they allow the cut grass to fall away from the spool preventing the grass from clogging the spool.
- 5) Start cutting nearest the mains power source and work away from it to make it easier to avoid the cable.
- 6) High grass should be cut in layers always beginning from the top. Do not overload your tool.
- 7) Do not cut damp or wet grass.
- 8) After finishing the cutting operation, keep the head close to ground level, release the switch and follow the motor to come to a complete stand still. Place the trimmer on the ground, switch off and remove the cable plug from the mains supply.



WARNING!



Periodically clean out the grass between the spool and the rim of the guard to prevent the tool from vibrating.

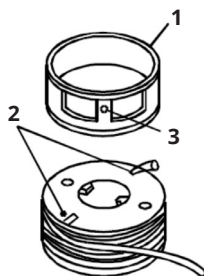
MAINTENANCE

7

Store the tool, instruction manual and accessories in a secure, dry place. In this way you will always have the information ready to hand.

- 1) Remove dust and dirt regularly.
- 2) Re-lubricate all moving parts at regular intervals.
- 3) Never use caustic agents to clean plastic parts.
- 4) Never disassemble the tool or carry out any repairs. Always have the trimmer maintained or repaired by a competent person at an authorized service center.

REPLACING THE SPOOL



- 1 - Inner cover
- 2 - Spool slots
- 3 - Spool hole

Fig. 6

- 1) Ensure the switch is in the off position and disconnect the cable plug from the mains supply.
- 2) Turn the spool holder take the inner cover off the spool then insert one end of the line into the base of the spool into the spool slot provided, ensuring that it is securely in place.

- 3) Wind the line anti-clockwise around the spool leaving a length of line (approx. 5cm).
- 4) With the length of line left insert it in to the hole of the inner cover and then replace the cover back on to the spool.
- 5) Push the spools back into the spool holder and tighten clockwise ensuring it is located securely in place.



CAUTION!



After changing the line spool, run the trimmer under no load for at least a minute to make sure that the line and the tool are both operating correctly. Use only the line spool as recommended by the manufacturer.

LUBRICATION AND SERVICE

1) There are no parts that require lubrication for normal use.

When the line trimmer needs new carbon brushes or after 40 hours of use, take it to an authorized service center for the replacement of the carbon brushes and the following:

- Lubrication
- Mechanical drive check including spindle, bearing and enclosure
- Electrical circuits check including switch, wiring and motor.
- Mechanical and electrical performance



CAUTION!



Do not use cleaning agents to clean the plastic parts of the tool. A mild detergent on a damp cloth is recommended. Water must never come into contact with the tool. Do not use this trimmer in wet rainy conditions.

STORAGE

- 1) Store the trimmer away from direct sunlight.
- 2) Do not store in a nylon bag as this can encourage formation of mould.
- 3) At the end of the season, give the trimmer an overall cleaning and a thorough check.

Do not leave the trimmer resting on the floor for extended periods as it could cause the shape of the guard to alter, posing a safety risk. Hang it off the floor by the top handgrip.

WARRANTY SERVICE TERMS

8

The international manufacturer warranty is 1 year. The warranty period starts from the date of purchase.

In cases when warranty period is longer than 1 year according to local legislation please contact your local dealer. The Seller which sells the product is responsible for granting the warranty. Please contact the Seller for warranty. Within the warranty period, if the product fails because of defects in the production process, it will be exchanged on the same product or repaired.

All faults caused by the manufacturer during the warranty period will be eliminated free of charge. Warranty repair is carried out only if you have a fully completed warranty card, the Buyer's signature of acceptance of the warranty terms, as well as a document supporting the purchase (cash receipt, sales slip or invoice). In the absence thereof, as well as in the event of errors or corrections not authenticated by the seller's seal or illegible inscriptions in the warranty card or tear-off coupon, no warranty repair is carried out, no objections to quality are accepted and the warranty card is withdrawn by the service center as invalid. The device is accepted for repair clean and full.



EC Declaration of Conformity

Nr. 176

The following products have been tested by us with the listed standards and found in compliance with the European Community Directive 2014/30/EU relating to electromagnetic compatibility, Directive 2006/42/EC relating to machinery.

Manufacturer: DIMAX INTERNATIONAL GmbH
Address: Flinger Broich 203, 40235 Duesseldorf, Germany
Product: Electric grass trimmer "Könnner & Söhnen"
Type / Model: KS GT-250

The statement is based on a single evaluation of above mentioned products. It does not imply an assessment of the whole production and does not permit the use of the test lab. logo. The manufacturer should ensure that all product in series production are in conformity with the product sample detailed in this report. The applicant should hold the whole technical report at disposal of the competent all the right.

Applied EC Directives: 2014/30/EU Electromagnetic compatibility Directive (EMC)
2006/42/EC Machinery Directive

Applied Standards: EN 60335-1:2012/A15:2021
EN 50636-2-91:2014
AfPS GS 2019:01 PAK
EN 55014-1:2017/A11:2020
EN IEC 55014-2:1997/A2:2008
EN IEC 55014-2:2021
EN61000-3-2:2019/A1:2021
EN 61000-3-3:2013
EN 61000-3-3:2013/A2:2021

2000/14/EC_2005/88/EC Annex VI

For model KS GT-250 Noise measured Lwa = 93 dB (A), guaranteed Lwa = 96 dB (A)



Issued Date: 2024-01-15
Place of issue: Duesseldorf
Director: Fomin P.

P. Fomin

DIMAX
International GmbH
Flinger Broich 203 40235 Düsseldorf
USt-ID DE296177274
koenner-soehnen.com

We DIMAX INTERNATIONAL GmbH hereby declare that specified above conforms covering European Parliament and Council Directives, 2006/42/EC of 17 May 2006 Machinery Directive, Electromagnetic compatibility Directive (EMC) 2014/30/EC of 26 February 2014. The CE mark above can be used under the responsibility of manufacturer. After completion of an EC declaration of Conformity and compliance with all relevant EC directives.

CONTACTS

Deutschland:

DIMAX International GmbH
Flinger Broich 203 -FortunaPark-
40235 Düsseldorf, Deutschland
www.koenner-soehnen.com

Ihre Bestellungen

orders@dimaxgroup.de

Kundendienst, technische Fragen und Unterstützung

support@dimaxgroup.de

Garantie, Reparatur und Service

service@dimaxgroup.de

Sonstiges

info@dimaxgroup.de

Polska:

DIMAX International
Poland Sp.z o.o.

Polska, Warszawska,
306B 05-082 Stare Babice,
info.pl@dimaxgroup.de

Україна:

ТОВ «Техно Трейд КС»,
вул. Електротехнічна 47, 02222,
м. Київ, Україна

sales@ks-power.com.ua
